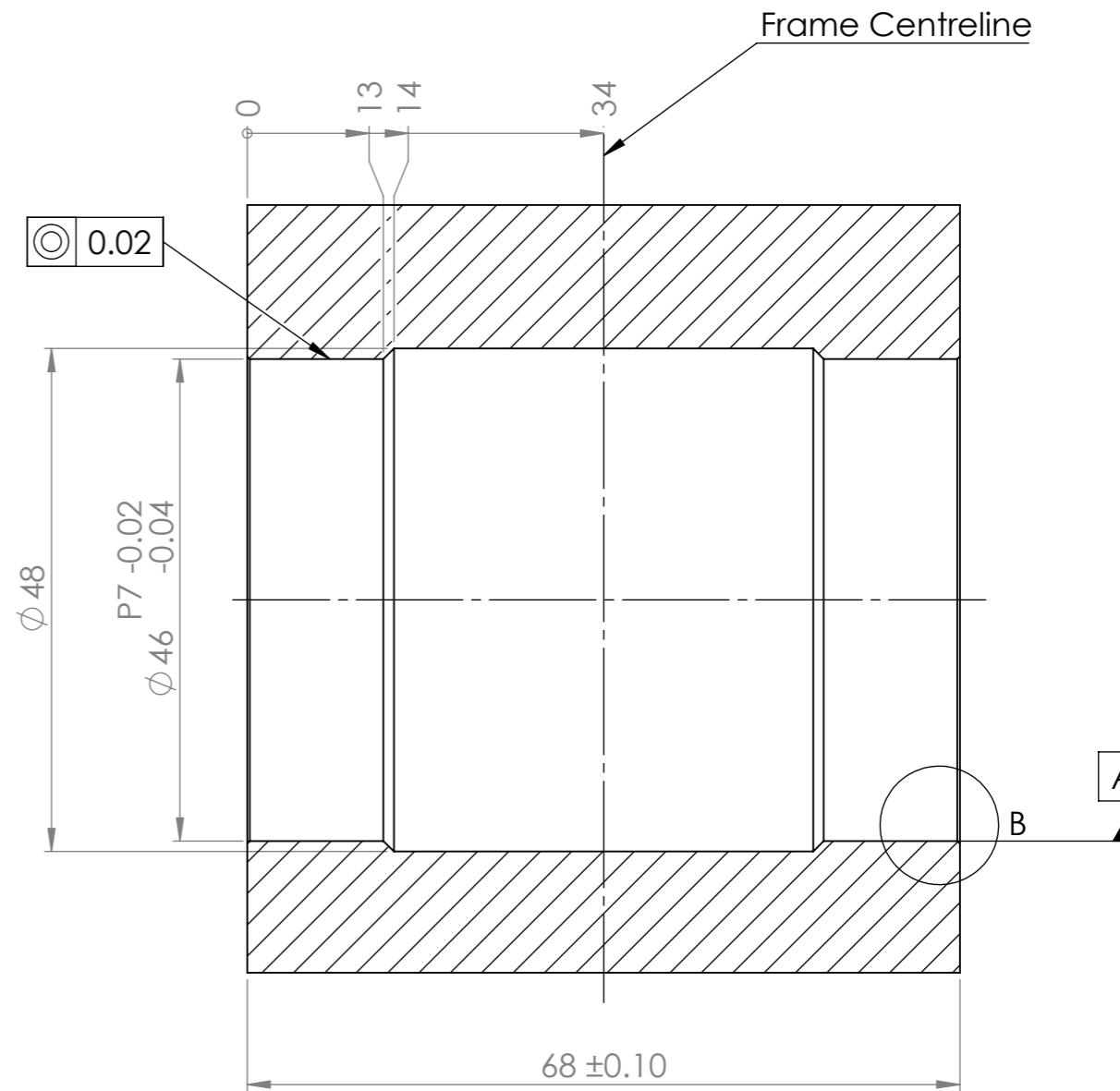



DETAIL B
SCALE 3 : 1



SECTION A-A

Notes:

1. PF30 uses 6806 (61806) bearings in delrin cups
2. Nominal 6806 bearing fit into cup is p6/M7
3. Bearing size conforms to ISO/DIN/JIS
4. Use of retaining compound in an aluminium shell is recommended
5. Use of retaining compound and activator/primer is recommended in a carbon shell
6. Designed for 30mm Axle

UNLESS OTHERWISE SPECIFIED: DIMENSIONS ARE IN MILLIMETERS SURFACE FINISH: 3.2 TOLERANCES: LINEAR: +/- 0.05mm ANGULAR: +/- 0.05deg		FINISH: Ra 1.6	DEBURR AND BREAK SHARP EDGES	DO NOT SCALE DRAWING	REVISION
DRAWN					
CHK'D					
APPV'D					
MFG					
Q.A					
NAME		SIGNATURE	DATE	DWG NO.	
				PF30 Shell	
		MATERIAL: n/a		SCALE:1.5:1	
		WEIGHT:		SHEET 1 OF 1	

A3