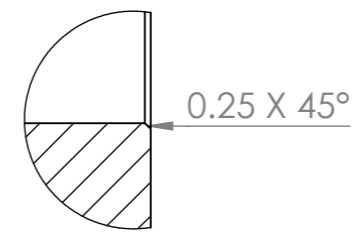



SECTION A-A



DETAIL B
SCALE 3 : 1

Notes:

1. BB386EVO is a press fit standard for road use
2. Bearings are pressed into delrin cups before insertion into the bike frame
3. Cup to Bearing fit is M7/p6
4. Official standard uses 6806 bearings designed for 30mm axles
5. Aftermarket solutions for Shimano/SRAM systems are available
6. Effective shell width including bottom bracket is 90.5mm nominal

UNLESS OTHERWISE SPECIFIED: DIMENSIONS ARE IN MILLIMETERS SURFACE FINISH: 3.2 TOLERANCES: LINEAR: +/- 0.05mm ANGULAR: +/- 0.05deg		FINISH: Ra 1.6	DEBURR AND BREAK SHARP EDGES	DO NOT SCALE DRAWING	REVISION
DRAWN			 hambini performance engineering		
CHK'D					
APPV'D					
MFG					
Q.A					
NAME		SIGNATURE	DATE	DWG NO.	A3
				BB386 EVO Shell	
			MATERIAL:	SCALE:1.5:1	SHEET 1 OF 1
			n/a		
			WEIGHT:		